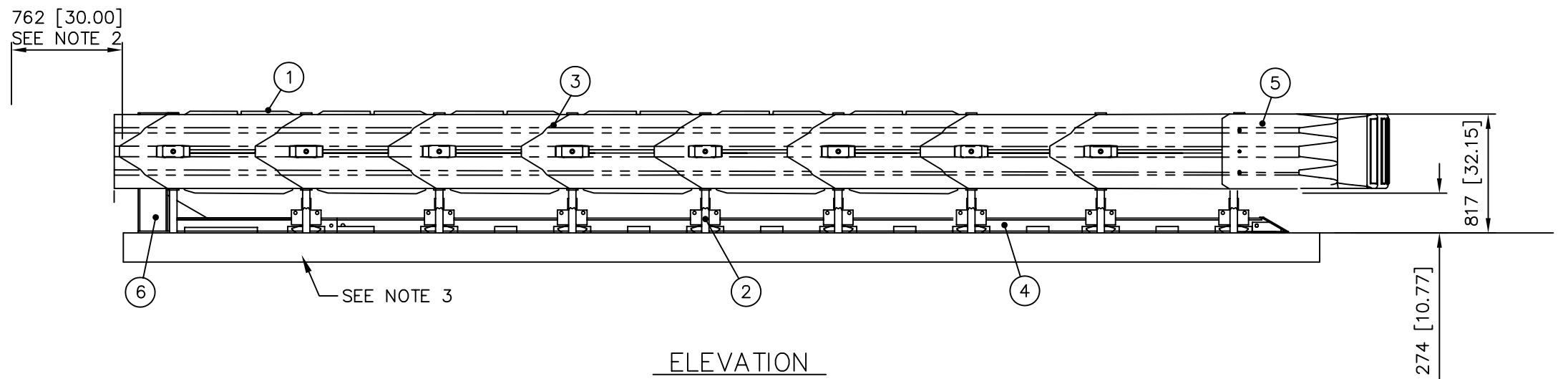


PLAN



ELEVATION  
LEFT SIDE

- NOTES:
1. MANUFACTURER RECOMMENDS REMOVAL OF ALL KERBS AND ISLANDS TO ENSURE PROPER IMPACT PERFORMANCE.
  2. PROVISION SHALL BE MADE FOR REAR FENDER PANELS TO SLIDE REARWARD UPON IMPACT 762 [30.00] MIN.
  3. 150 [6.00] MIN. REINFORCED 28 MPa [4000 PSI] P.C. CONCRETE PAD OR 200 [8.00] MIN. NON-REINFORCED 28 MPa [4000 PSI] P.C. CONCRETE ROADWAY.
  4. SEE THE "QUADGUARD CEN SYSTEM DESIGN MANUAL", FOR A DESCRIPTION OF ITS IMPACT PERFORMANCE CHARACTERISTICS AND DESIGN LIMITATIONS BEFORE PLACING A SYSTEM AT A GIVEN SITE. INFORMATION AND COPIES OF CURRENT MANUAL ARE AVAILABLE BY CALLING CUSTOMER SERVICE DEPARTMENT AT (888) 323-6374.
  5. UNITS OF MEASUREMENT ARE MILLIMETERS [INCHES], UNLESS OTHERWISE NOTED.
  6. FINAL ORIENTATION OF QUADGUARD SYSTEM TO BE DETERMINED BY PROJECT ENGINEER.

UNIDIRECTIONAL  
MODEL NO. QI6908



ENERGY ABSORPTION SYSTEMS, INC.  
ENGINEERING AND RESEARCH DEPARTMENT

QUADGUARD® CEN SYSTEM  
69" SYSTEM w/ TENSION STRUT BACKUP  
N8 Rathcormac Fermoy

GREAT BRITAIN

SCALE 1=40 DWG. 60-26-65 SHEET 1 of 1 REV

REFERENCES

SERIAL#	_____	DIAPHRAGM ASSY.	3540509-0000
SALES ORDER#	_____	NOSE ASSY.	3540131-0000
EH PROJECT#	GB_066	FENDER PANEL ASSY.	3540472-0000
DESIGN SPEED	110 km/h [68 mph]	BACKUP ASSY.	3540565-0000
NOSE COLOR	_____	RAIL ASSY.	3540060-0CEN
NUMBER OF UNITS	1	CONCRETE PAD	3540011-0CEN
		BUMPER ASSY.	3540580-0000

DRAWN:	K. LOONEY	DATE:	2/3/06
DESIGNED:	---	DATE:	---
CHECKED:	K. LOONEY	DATE:	2/3/06
APPROVED	R. Brougher	DATE:	2/3/06
CAD FILE:	602665.dwg		

KEY	①	QUADGUARD CARTRIDGE	④	MONORAIL	⑦	BUMPER
	②	DIAPHRAGM	⑤	NOSE ASSY.		
	③	FENDER PANEL	⑥	BACKUP		
Revisions		Date	Rev.	By	Ckd.	App.